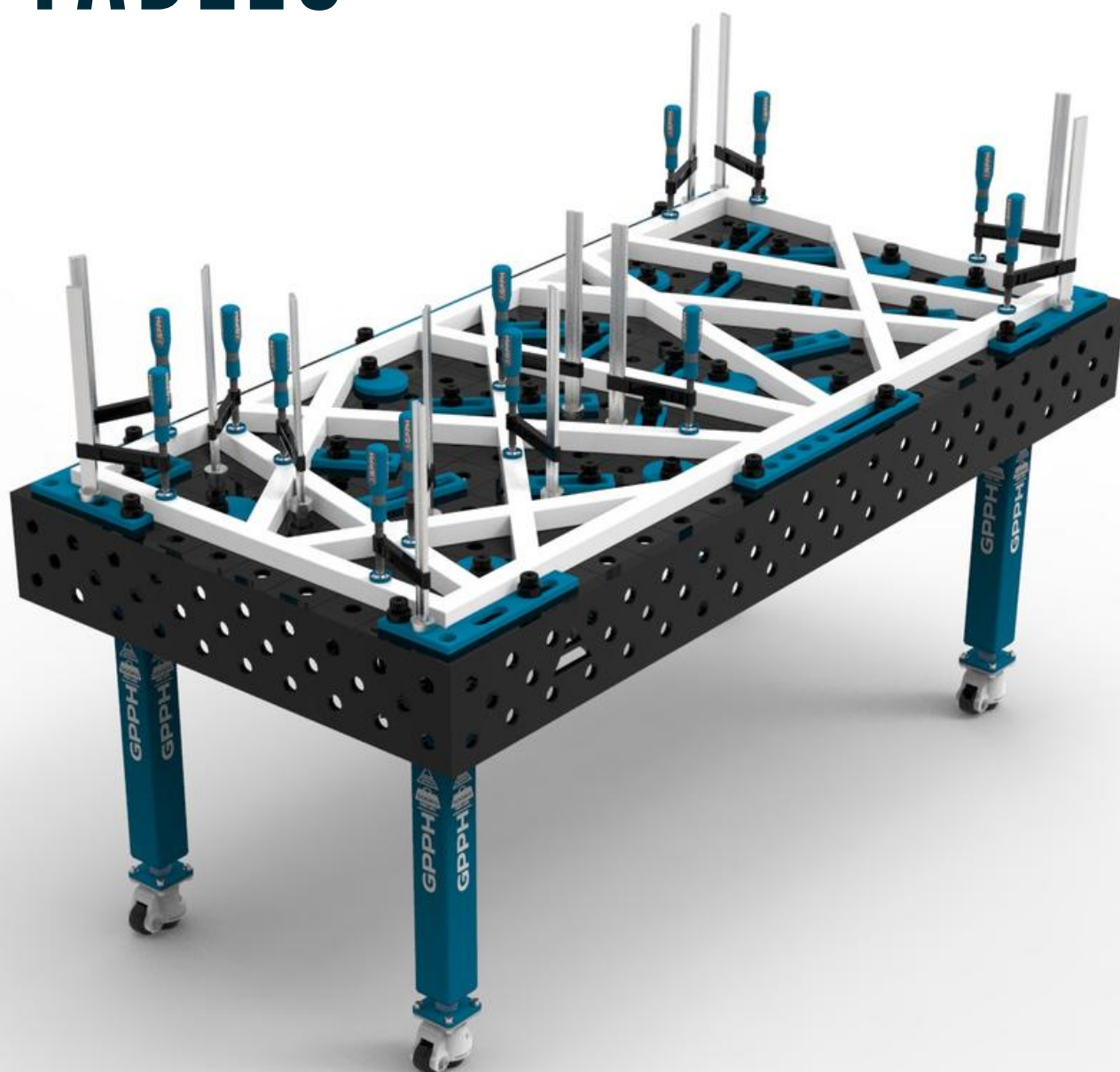


TABLE OF CONTENTS

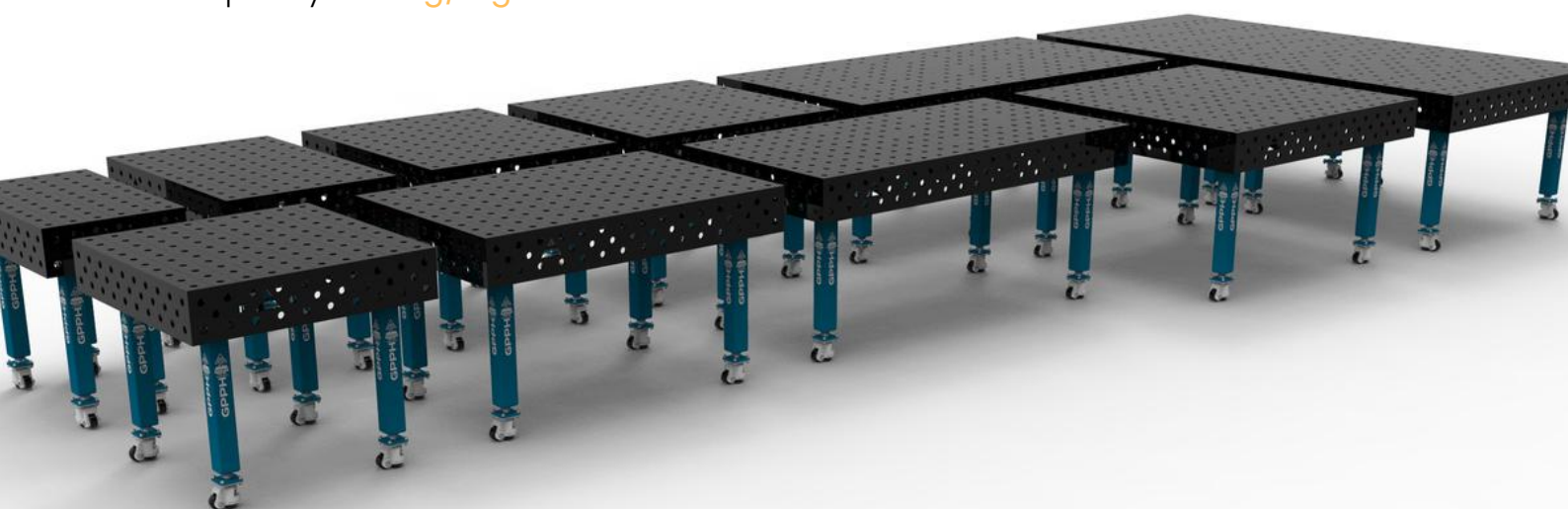
1.	Traditional Welding Tables PLUS	5
	Technical parameters	6
	Dimensions of Traditional Welding Tables PLUS	7
2.	Greater mobility of the GPPH Welding Table - Legs on a wheel!	12
3.	Stainless steel covers for GPPH Traditional Welding Tables	13
4.	Modular Welding Tables GPPH	14
	Technical parameters	15
	Advantages and benefits of Modular Tables	16
	Dimensions and types of GPPH Modular Welding Tables	18
	Additional equipment for Modular Welding Tables	20
5.	Additional equipment for GPPH Welding Tables	21
	Tooling PLUS	22
	Fastening clamps	26
	Angle clamps, prisms	29
	Welding torch handle, toolshelves	30
	Professional chemicals	32
6.	Toolkit proposal for GPPH Welding Tables	33
	Toolkit PLUS no. 1	34
	Toolkit PLUS no. 2	35
	Toolkit PLUS no. 3	36
	Toolkit PLUS no. 4	37
7.	Order does matter - GPPH Tool Trolley	38

GPPH TRADITIONAL WELDING TABLES **PLUS**



TECHNICAL PARAMETERS

- ✓ Stable and massive construction
- ✓ The highest quality of workmanship
- ✓ Perfect flatness of the table [$\pm 0,5\text{mm}$]
- ✓ Made of S355J2+N
- ✓ Holes of system $\varnothing 16$ or $\varnothing 28$ in the grid 100x100
- ✓ Three grids of holes on the 4 sides
- ✓ Chamfered and milled holes for easy tool assembly
- ✓ Engraved scale in the grid 100x100mm
- ✓ Height adjustment of the table with standard legs approx. 880–930mm
- ✓ Possibility of using stainless steel covers
- ✓ Tables can be combined freely to extend a working surface
- ✓ All tables are reinforced with ribs
- ✓ Produced with standard ISO 2768–1
- ✗ Milled worktop edges
- Thickness **12mm**
- Table legs made of profile **80x80mm**
- Capacity: **500kg/leg***



*Applies to standard legs on the foot. When it comes to legs on wheels, it is the static load capacity - it refers to the situation where the table is supported on the feet protruding from the wheels.

DIMENSIONS OF TRADITIONAL WELDING TABLES^{PLUS}



GPPH TRADITIONAL WELDING TABLE^{PLUS} TWT.PLUS.300148

- length x width: 3000x1480mm
- side plate: 200mm
- table weight: approx. 780 kg
- capacity: 4 000 kg
- number of legs: 8
- net price: 35 420 kr.



GPPH TRADITIONAL WELDING TABLE^{PLUS} TWT.PLUS.240120

- length x width: 2400x1200mm
- side plate: 200mm
- table weight: approx. 510 kg
- capacity: 3 000 kg
- number of legs: 6
- net price: 21 120 kr.

DIMENSIONS OF TRADITIONAL WELDING TABLES^{PLUS}



GPPH TRADITIONAL WELDING TABLE^{PLUS} TWT.PLUS.200100

- length x width: 2000x1000mm
- side plate: 200mm
- table weight: approx. 370 kg
- capacity: 2 000 kg
- number of legs: 4
- net price: 17 770 kr.



GPPH TRADITIONAL WELDING TABLE^{PLUS} TWT.PLUS.150148

- length x width: 1500x1480mm
- side plate: 200mm
- table weight: approx. 390 kg
- capacity: 2 000 kg
- number of legs: 4
- net price: 17 710 kr.

DIMENSIONS OF TRADITIONAL WELDING TABLES^{PLUS}



GPPH TRADITIONAL WELDING TABLE^{PLUS} TWT.PLUS.150100

- length x width: 1500x1000mm
- side plate: 200mm
- table weight: approx. 300 kg
- capacity: 2 000 kg
- number of legs: 4
- net price: 15 660 kr.



GPPH TRADITIONAL WELDING TABLE^{PLUS} TWT.PLUS.120120

- length x width: 1200x1200mm
- side plate: 200mm
- table weight: approx. 280 kg
- capacity: 2 000 kg
- number of legs: 4
- net price: 14 650 kr.

DIMENSIONS OF TRADITIONAL WELDING TABLES^{PLUS}



GPPH TRADITIONAL WELDING TABLE^{PLUS} TWT.PLUS.120100

- length x width: 1200x1000mm
- side plate: 200mm
- table weight: approx. 260 kg
- capacity: 2 000 kg
- number of legs: 4
- net price: 13 550 kr.



GPPH TRADITIONAL WELDING TABLE^{PLUS} TWT.PLUS.12080

- length x width: 1200x800mm
- side plate: 200mm
- table weight: approx. 220 kg
- capacity: 2 000 kg number of
- legs: 4
- net price: 11 240kr.

DIMENSIONS OF TRADITIONAL WELDING TABLES^{PLUS}



GPPH TRADITIONAL WELDING TABLE^{PLUS} TWT.PLUS.100100

- length x width: 1000x1000mm
- side plate: 200mm
- table weight: approx. 230 kg
- capacity: 2 000 kg
- number of legs: 4
- net price: 10 900 kr.



GPPH TRADITIONAL WELDING TABLE^{PLUS} TWT.PLUS.10060

- length x width: 1000x600mm
- side plate: 200mm
- table weight: approx. 170 kg
- capacity: 2 000 kg number of
- legs: 4
- net price: 9 020 kr.

NEED MORE MOBILITY OF YOUR WELDING TABLE?

CHECK OUT OUR OFFER OF WELDING TABLES ON LEGS WITH WHEELS!



Net prices of a leg with a wheel in different versions of GPPH Traditional Welding Tables*:

Version PLUS

550 kr.

*The price of a leg on a wheel should be multiplied by the number of legs in the selected dimensional version, and then the total should be added to the net price of the chosen Welding Table.

When ordering legs with wheels, the customer receives only this version of the legs (no legs with feet).

DO YOU WELD STAINLESS STEEL ELEMENTS AND STRUCTURES?

CHECK OUR OFFER OF STAINLESS STEEL COVERS FOR GPPH TRADITIONAL WELDING TABLES!

The covers are made of 1mm thick stainless steel.

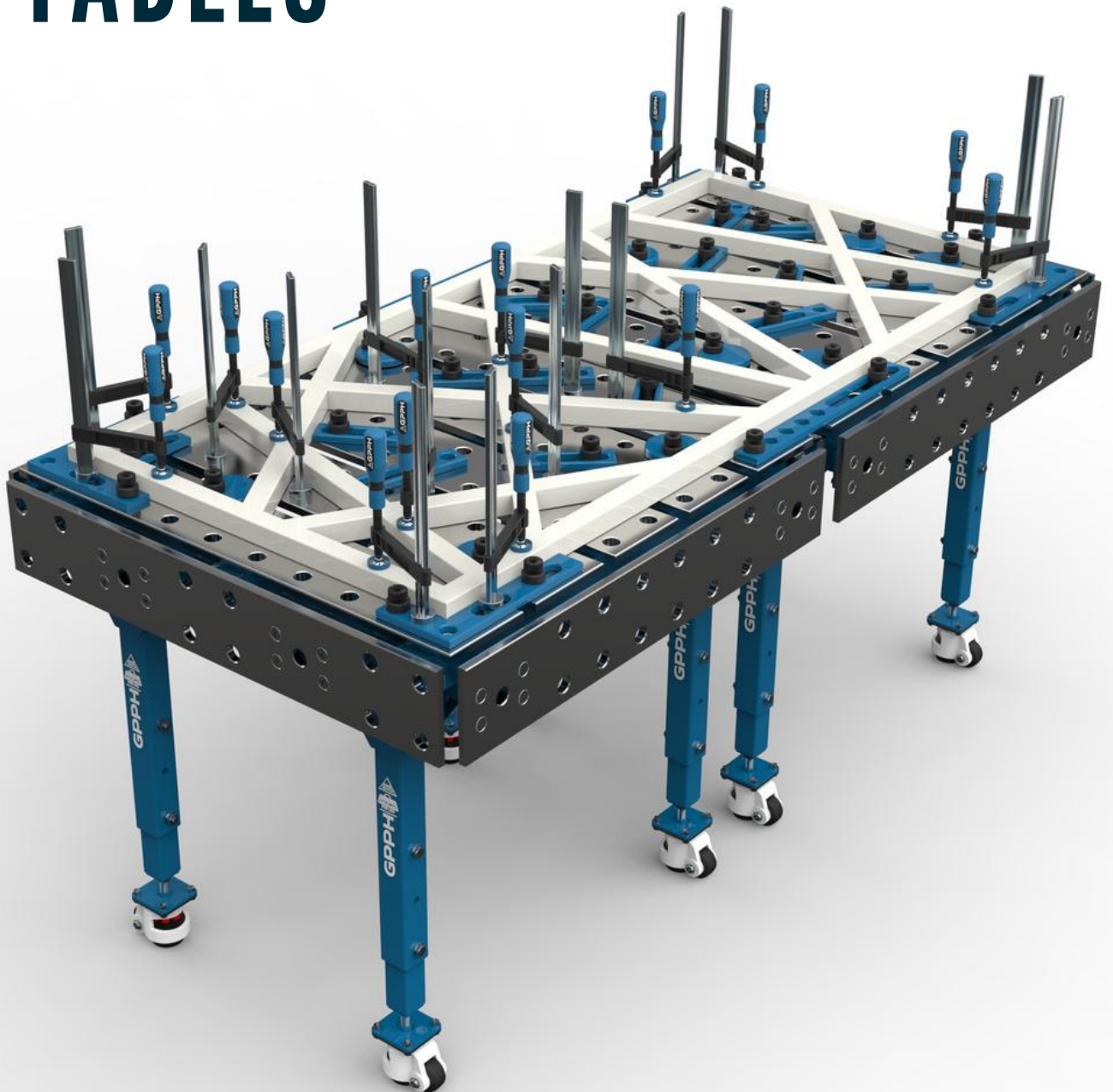
Put a cover on the Traditional GPPH Welding Table to transform it into an ideal table for welding stainless steel.

The hole pattern of the stainless steel cover is the same as the hole pattern of a Traditional Welding Table.



*Valuation of the stainless steel cover only on request.

GPPH MODULAR WELDING TABLES



TECHNICAL PARAMETERS

- Stable construction
- The highest quality of workmanship
- Perfect flatness of the table due to the ability to adjust the Surface in three places
- Hole and slot possibility of tools installation
- Worktop made of S355J2+N
- Thickness 15mm
- Holes of system $\varnothing 16$ or $\varnothing 28$ in the grid 100x100
- Chamfered and milled holes for easy tool assembly
- Wheels with supports in standard leg
- Adjustable supports in additional legs, in staggered versions
- Adjustable table height in the range of 850mm – 1150mm, P=50mm
- Tables can be combined freely to extend a working surface
- Milled plate surface
- Set of side plates purchase option
- Produced with standard ISO 2768-1
- Capacity: 250kg/leg
- Tools from the PRO, PLUS, and ECO lines are also compatible with GPPH Modular Tables



ADVANTAGES AND BENEFITS OF MODULAR TABLES

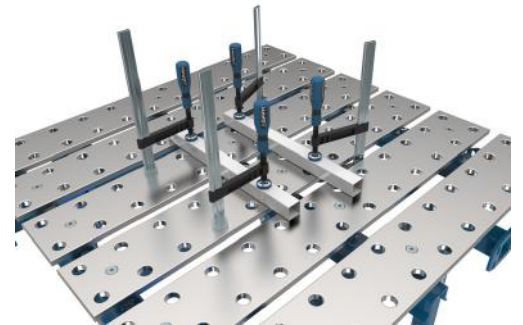
PERFECT FLATNESS

Due to the possibility of adjusting the height of the countertops using spacers, the operator can set a perfect working surface of the table. This solution allows the user to use the table for many years while maintaining a perfect surface of the countertop.



HOLE AND SLOT MOUNTING TOOLS

Ø28 holes are standard in the table in a 100x100mm grid. Besides, the design of our modular tables allows you to increase the number of places for mounting tools in the gaps between the top plates - increased ergonomics.



ADJUSTABLE PLATES

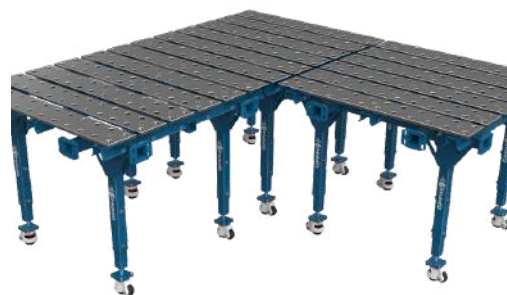
We can move them by increasing the working surface, as well as exchanging them for new ones, which affects the various adaptation of the table to the currently performed works and longevity of use.



ADVANTAGES AND BENEFITS OF MODULAR TABLES

INCREASING WORKING AREA

Done by sliding plates (as above), but above all, we obtain it by quickly joining together many tables in table set. The working area can be expanded in different directions. The operator can adjust the arrangement of tables depending on the current location in the production hall.



ADJUSTABLE TABLE HEIGHT

Range from 850mm to 1150mm, every 50mm. The possibility of adapting the station to your needs, which affects the ergonomics of work for many operators.



FLEXIBILITY OF THE NUMBER OF WELDING STATIONS

A variety of configurations, increasing the space by joining them, as well as increasing the number of positions by diving them.



DIMENSIONS AND TYPES OF GPPH MODULAR WELDING TABLES

SINGLE TABLE

We offer three standard versions. They are ideal for smallscale production or serve as the basis for unlimited expansion of the surface of the welding station.

DIMENSIONS

- Table 1000x1000 [mm]
- Table 1200x1200 [mm]
- Table 1600x1500 [mm]



UNFOLDABLE SINGLE TABLE

Each table from our offer can be unfolded thanks to sliding plates and the use of additional legs.

DIMENSIONS

- Table 1770x1000 [mm] (Table 1000x1000mm + 5x legs)
- Table 2170x1200 [mm] (Table 1200x1200mm + 6x legs)
- Table 2670x1600 [mm] (Table 1500x1600mm + 8x legs).



DIMENSIONS AND TYPES OF GPPH MODULAR WELDING TABLES

DOUBLE TABLE

The most popular sets are sets composed of two single tables. The design of the tables allows expansion in every direction.

DIMENSIONS

- Table 2000x1000 [mm] (2x Tables 1000x1000)
- Table 2400x1200 [mm] (2x Tables 1200x1200)
- Table 3200x1500 [mm] (2x Tables 1600x1500)



KIT WITH A LARGE WORKING SURFACE

Connection of two unfolded tables by means of connectors are the perfect solution for the spatial construction.

DIMENSIONS

- Table 1770x2630 [mm]
(2x Tables 1000x1000 +2x connector L=630 mm + 10x legs)
- Table 2170x3030 [mm]
(2x Tables 1200x1200 +2x connector L=630 mm + 12x legs)
- Table 2670x4000 [mm]
(2x Tables 1500x1600 +2x connector L=800 mm + 16x legs)



ADDITIONAL EQUIPMENT FOR MODULAR WELDING TABLE



SET OF SIDE PLATES

For a table with
dimensions:
1000x1000 [mm]
1200x1200 [mm]
1500x1600 [mm]

Quote
on
request



SET OF TOP PLATES

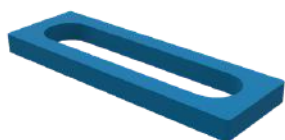
For a table with
dimensions:
1000x1000 [mm]
1200x1200 [mm]
1500x1600 [mm]

Quote
on
request

ADDITIONAL EQUIPMENT FOR GPPH WELDING TABLES



FLAT TOOLS PLUS



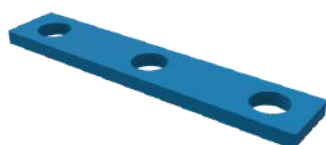
STOP PLUS 150
N.004PLUS | Cat. No.

210 kr.



STOP PLUS 225
N.005PLUS | Cat. No.

240 kr.



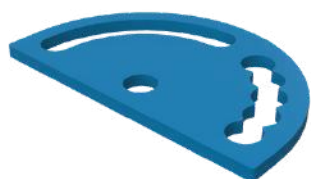
STOP PLUS 260
N.006PLUS | Cat. No.

375 kr.



STOP PLUS 500
N.007PLUS | Cat. No.

240 kr.



PROTRACTOR PLUS
N.008PLUS | Cat. No.

475 kr.



ANGLE PRECISION
SQUARE (FLAT)
PLUS 275X150
N.009PLUS | Cat. No.

425 kr.



ANGLE PRECISION
SQUARE (FLAT)
PLUS 320X150
N.010PLUS | Cat. No.

490 kr.



ANGLE PRECISION
SQUARE (FLAT)
PLUS 350X250
N.011PLUS | Cat. No.

510 kr.



ECCENTRIC STOP
PLUS Ø100
N.003PLUS | Cat. No.

240 kr.

SPATIAL TOOLS PLUS



ANGLE BRACKET
PLUS 185X175
N.012PLUS | Cat. No.

490 kr.



ANGLE BRACKET
PLUS 200X200
N.013PLUS | Cat. No.

875 kr.



ANGLE BRACKET
PLUS 300X190
N.014PLUS | Cat. No.

750 kr.



ANGLE BRACKET
PLUS 450X250
N.015PLUS | Cat. No.

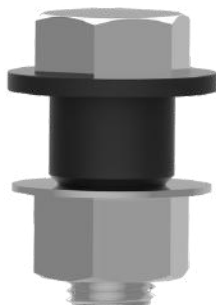
1 050 kr.



ANGLE BRACKET PLUS
275X500X175X100
N.016PLUS | Cat. No.

1 840 kr.

ASSEMBLY TOOLS PLUS



MOUNTING PIN PLUS

T.015PLUS | Cat. No.

100 kr.

The PLUS mounting pin allows seamless connection of the PLUS Welding Tables and therefore increasing their working surface.



FAST ASSEMBLY BOLT 23 PLUS

N.002PLUS | Cat. No.

300 kr.

The 23 PLUS fast assembly bolt is suited for mounting PLUS tools on a PLUS Welding Table.



FAST ASSEMBLY BOLT UNI

N.002UNI | Cat. No.

430 kr.

The UNI fast assembly bolt is the most universal. Thanks to it, you can, for example, mount tools from the ECO series on the Welding Table from the PLUS series.

INCREASING THE WORK SURFACE ^{PLUS}

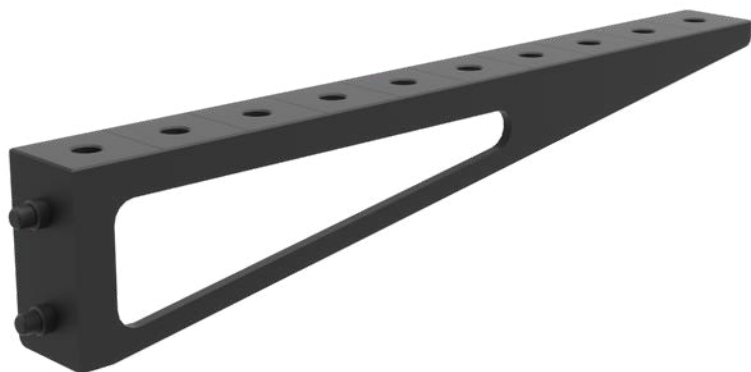


TABLE EXTENSION PLUS

1000X100

N.017PLUS | Cat. No.

1 650 kr.

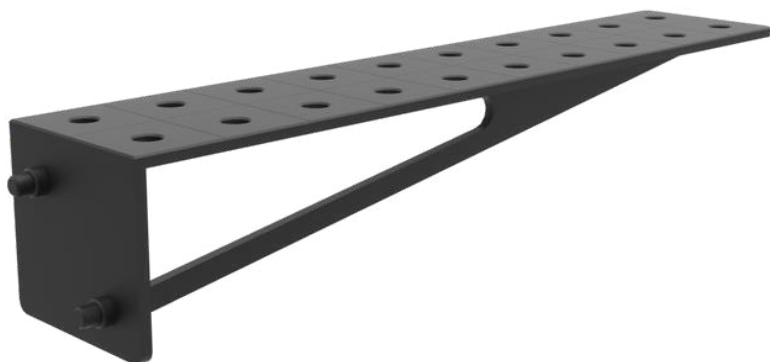


TABLE EXTENSION PLUS

1000X200

N.018PLUS | Cat. No.

2 110 kr.



WELDING CONNECTION

BLOCK PLUS 1000X200X200

N.019PLUS | Cat. No.

2 925 kr.

FASTENING CLAMPS



FASTENING CLAMP
N.001A | Cat. No.

325 kr.



FASTENING CLAMP
WITH LEVER
N.001B | Cat. No.

550 kr.



VARIABLE THROAT
DEPTH CLAMP
N.001C | Cat. No.

725 kr.



VARIABLE THROAT
DEPTH WITH LEVER
CLAMP
N.001D | Cat. No.

960 kr.



FASTENING CLAMP
N.001E | Cat. No.

450 kr.



FASTENING CLAMP
WITH LEVER
N.001F | Cat. No.

790 kr.

FASTENING CLAMPS



BESSEY SCREW CLAMP
(WORKING RANGE
200MM)

N.001G | Cat. No.

325 kr.



BESSEY SCREW CLAMP
(WORKING RANGE
300MM)

N.001H | Cat. No.

475 kr.



BESSEY SCREW CLAMP
(WORKING RANGE
600MM)

N.001I | Cat. No.

625 kr.



BESSEY LEVER CLAMP
(WORKING RANGE 200MM)

N.001J | Cat. No.

600 kr.



BESSEY LEVER CLAMP
(WORKING RANGE
300MM)

N.001K | Cat. No.

825 kr.



BESSEY HIGH-PERFORMANCE
SCREW CLAMP (WORKING
RANGE 300MM)

N.001L | Cat. No.

875 kr.

FASTENING CLAMPS



BESSEY HIGH-PERFORMANCE
SCREW CLAMP (WORKING
RANGE 500MM)

N.001M | Cat. No.

1 075 kr.



BESSEY CLAMPING ELEMENT
FOR WELDING TABLES WITH
SPECIALS PRESSURE PLATE

N.001N | Cat. No.

750 kr.



BESSEY CLAMPING ELEMENT
FOR WELDING TABLES WITH
GRIPPING ARM

N.001O | Cat. No.

1 040 kr.



VERTICAL
CLAMP WITH OPEN
ARM 330/A

N.001P | Cat. No.

510 kr.



VERTICAL
CLAMP WITH OPEN
ARM 230/A

N.001R | Cat. No.

375 kr.



BESSEY TILTING
ADAPTER

N.001S | Cat. No.

675 kr.

ANGLE CLAMPS, PRISMS



BESSEY WELDING ANGLE
CLAMP (WORKING
RANGE 2X90MM)

N.024A | Cat. No.

1 850 kr.



BESSEY WELDING ANGLE
CLAMP (WORKING RANGE
2X120MM)

N.024B | Cat. No.

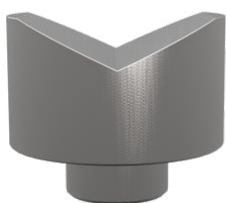
2 100 kr.



BESSEY WELDING
CLAMP SET

N.024C | Cat. No.

3 150 kr.



PRISM
Ø58mm 130°

N.021 | Cat. No.

125 kr.



PRISM
Ø58mm 130°/ 90°

N.023 | Cat. No.

175 kr.

PRISMS, WELDING TORCH HANDLE, TOOL SHELVES



PRISM
Ø58mm 90°
N.022 | Cat. No.

125 kr.



WELDING TORCH
HANDLE
N.020 | Cat. No.

250 kr.



FAST ASSEMBLY
BOLT SHELF S
T.011A | Cat. No.

175 kr.



FAST ASSEMBLY
BOLT SHELF M
T.011B | Cat. No.

200 kr.



CLAMP SHELF S
T.011C | Cat. No.

175 kr.



CLAMP SHELF M
T.011D | Cat. No.

200 kr.

TOOL SHELVES



FLAT SHELF S
T.011E | Cat. No.

225 kr.



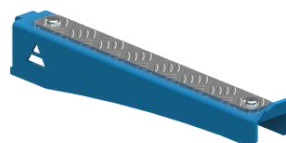
FLAT SHELF M
T.011F | Cat. No.

250 kr.



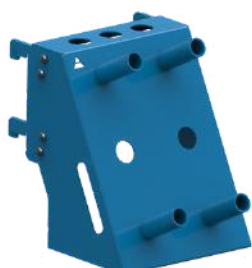
FLAT SHELF L
T.011G | Cat. No.

275 kr.



MOBILE SHELF
FOR EXTENSIONS
T.011J | Cat. No.

125 kr.



MIX SHELF
T.011H | Cat. No.

325 kr.



DOCUMENTATION
SHELF
T.011I | Cat. No.

250 kr.

PROFESSIONAL CHEMICALS



CONCENTRATED
ANTI-SPATTER
LIQUID BEST WELD 1L
T.013A | Cat. No.

250 kr.



CONCENTRATED
ANTI-SPATTER
LIQUID BEST WELD 5L
T.013B | Cat. No.

725 kr.



CONCENTRATED
DEGREASING AND
CLEANING LIQUID
BEST MAX 1L
T.013C | Cat. No.

250 kr.



CONCENTRATED
DEGREASING AND
CLEANING LIQUID
BEST MAX 5L
T.013D | Cat. No.

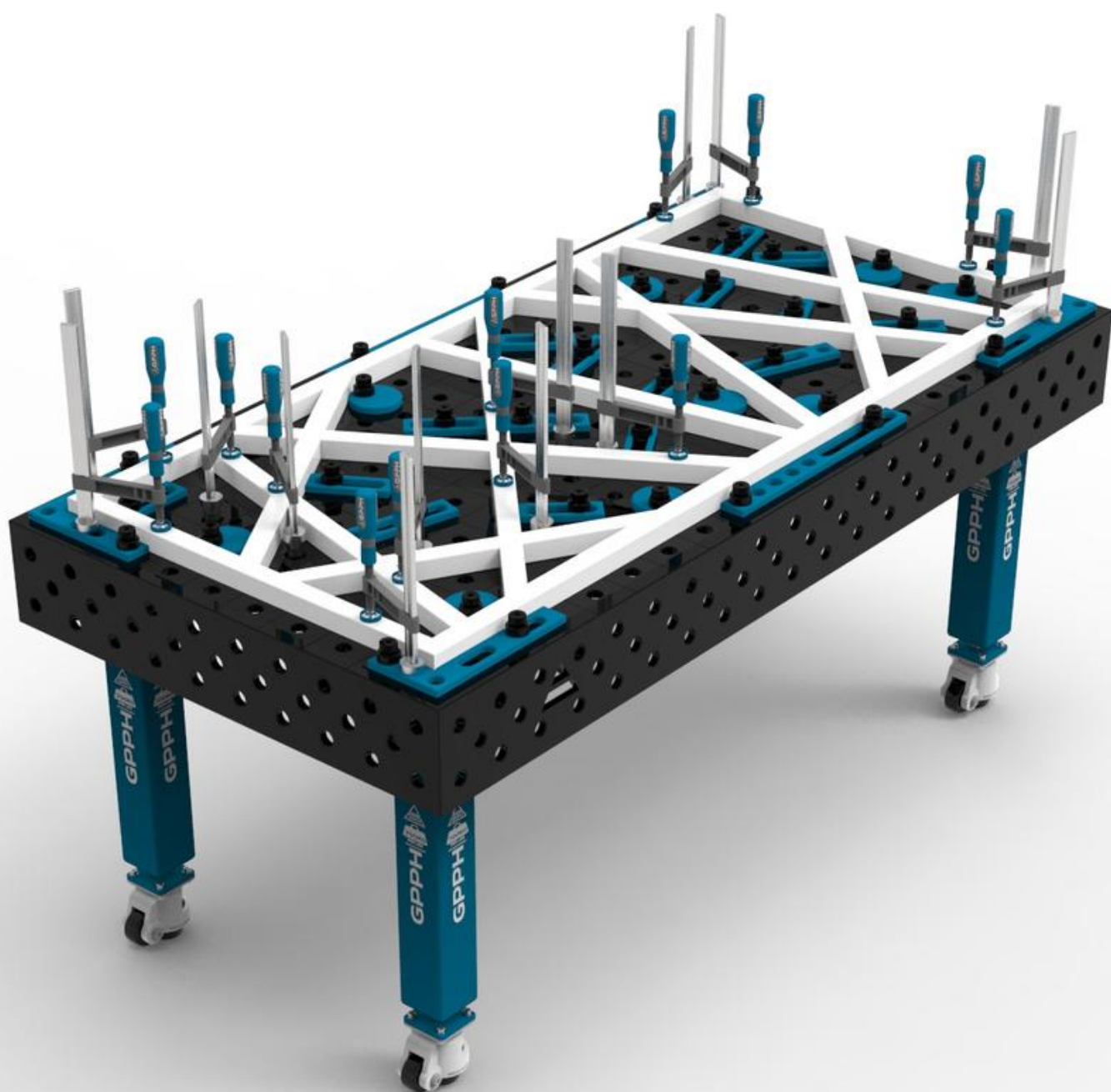
1 175 kr.



SPRAYER
T.014 | Cat. No.

75 kr.

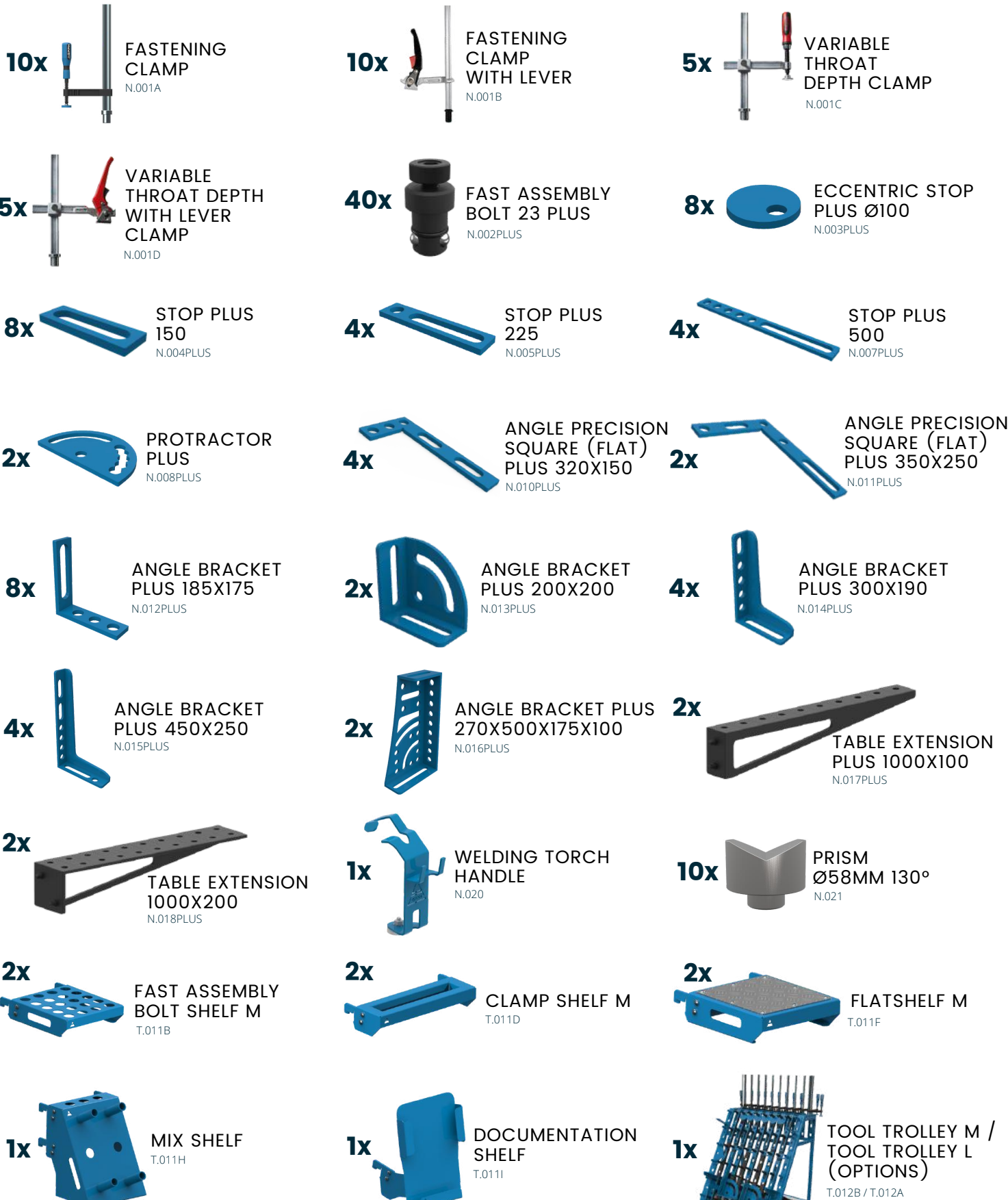
TOOLKIT PROPOSAL FOR GPPH WELDING TABLES



TOOLKIT^{PLUS} NO. 1

Net price of toolkit PLUS no. 1: 69 275 kr.

Number of jigs & fixtures included in the kit: 146



TOOLKIT^{PLUS} NO. 2

Net price of toolkit PLUS no. 2: 43 025 kr.

Number of jigs & fixtures included in the kit: 96



8x

FASTENING
CLAMP
N.001A



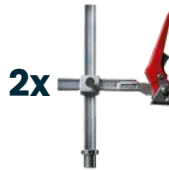
4x

FASTENING
CLAMP
WITH LEVER
N.001B



2x

VARIABLE
THROAT
DEPTH CLAMP
N.001C



2x

VARIABLE
THROAT DEPTH
WITH LEVER
CLAMP
N.001D



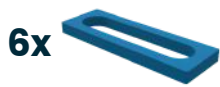
30x

FAST ASSEMBLY
BOLT 23 PLUS
N.002PLUS



6x

ECCENTRIC STOP
PLUS Ø100
N.003PLUS



6x

STOP PLUS
150
N.004PLUS



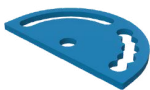
4x

STOP PLUS
225
N.005PLUS



2x

STOP PLUS
500
N.007PLUS



1x

PROTRACTOR
PLUS
N.008PLUS



4x

ANGLE PRECISION
SQUARE (FLAT)
PLUS 320X150
N.010PLUS



2x

ANGLE PRECISION
SQUARE (FLAT)
PLUS 350X250
N.011PLUS



4x

ANGLE BRACKET
PLUS 185X175
N.012PLUS



2x

ANGLE BRACKET
PLUS 200X200
N.013PLUS



2x

ANGLE BRACKET
PLUS 300X190
N.014PLUS



2x

ANGLE BRACKET
PLUS 450X250
N.015PLUS



1x

TABLE EXTENSION
PLUS 1000X100
N.017PLUS



1x

TABLE EXTENSION
PLUS 1000X200
N.018PLUS



4x

PRISM Ø58MM
130°/90°
N.023



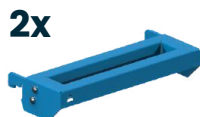
1x

WELDING TORCH
HANDLE
N.020



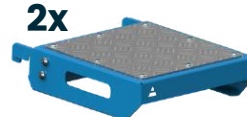
2x

FAST ASSEMBLY
BOLT SHELF M
T.011B



2x

CLAMP SHELF M
T.011D



2x

FLATSHELF M
T.011F



1x

MIX SHELF
T.011H



1x

TOOL TROLLEY M /
TOOL TROLLEY L
(OPTIONS)
T.012B / T.012A

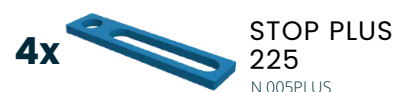
Besøg os på TornboSvejs.dk

Alle priser er eks.kl. moms og fragt

TOOLKIT^{PLUS} NO. 3

Net price of toolkit PLUS no. 3: 20 900 kr.

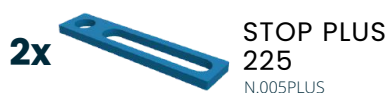
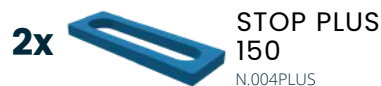
Number of jigs & fixtures included in the kit: 60



TOOLKIT^{PLUS} NO. 4

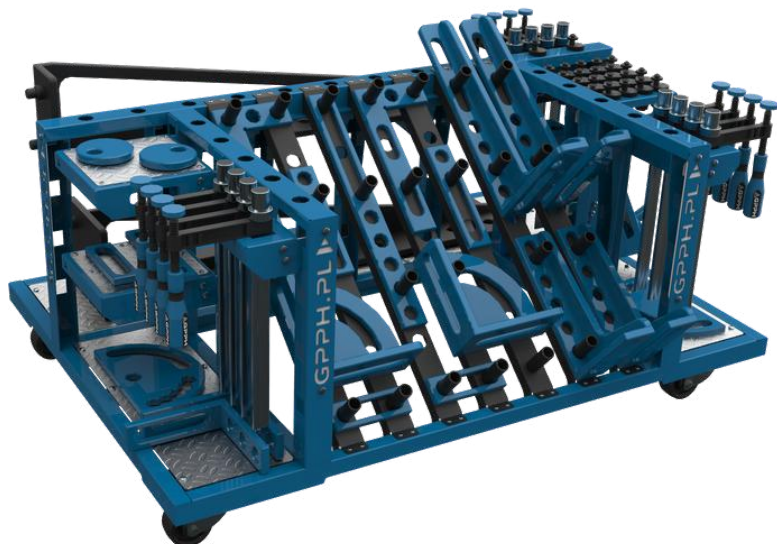
Net price of toolkit PLUS no. 4: 8 425 kr.

Number of jigs & fixtures included in the kit: 28



ORDER DOES MATTER

GPPH TOOL TROLLEY



One of the many advantages of the small tool trolley is that it fits under most dimensions of GPPH Welding Tables. You have all the tools at your fingertips while working!

Net price: 6 525 kr.

T.012B | Cat. No.

The large GPPH tool trolley will accommodate a set of tools even for the most demanding user! Thanks to it, your workplace will become transparent like never before, and GPPH tools will be clearly arranged and more accessible.

Net price: 6 525 kr.

T.012A | Cat. No.

